

ARIAFIX:

“LCW/ SENSIENT Cosmetic Technology”

ARIAFIX,

LCW

LCW /SENSIENT Cosmetic Technologies
ARIAFIX,

2

ARIAFIX

ARIAFIX

ARIAFIX

ARIAFIX

LCW
ARIANOR,

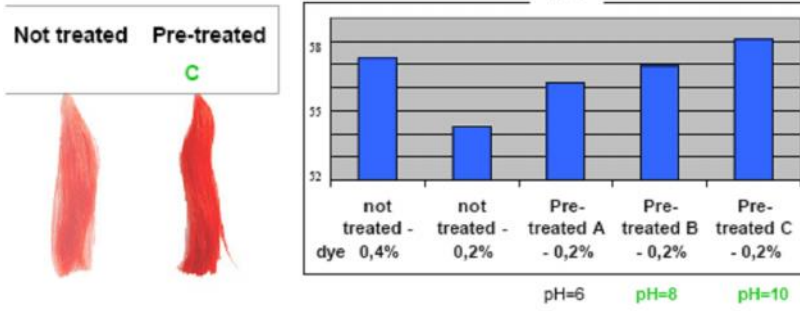
LCW

ARIANOR Madder Red,

ARIAFIX

.1

pH influence on colour intensity



ARIAFIX pre-treatment: intensity x 1.5 to 2.5

.1, ARIAFIX

1,5 - 2,5

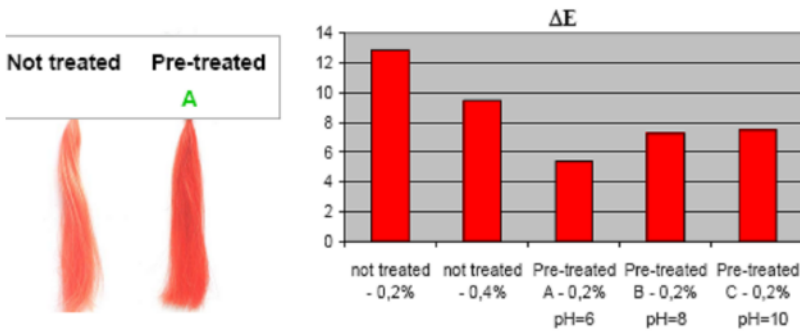
(=10)

0,2%

2

.2

pH influence after shampoos



shampoo test: 2 x 15 min in SLES 12%, pH=5.5

.2,

()

0,4%

0,2%,

LCW

ARIAFIX

ARIAFIX
20% ARIAFIX.

ARIAFIX 15 10 – 15 ,
30 – ARIAFIX,
60 ,
.3
.3

INFLUENCE OF SOLVENT SYSTEM

Pre-treatment formulations (%W/W)

	C	F	G
ARIAFIX	20	20	20
COVAFIX 123	---	18	---
UREA	---	---	15
CETRIMONIUM CHLORIDE	---	2	2
HYDROXYETHYLCELLULOSE	1,5	1,5	1,5
CITRIC ACID	to pH=10	to pH=10	to pH=7
DEMINERALIZED WATER	to 100	to 100	to 100

COVAFIX 123 (3 LCW), 20% ARIAFIX

INFLUENCE OF SOLVENT SYSTEM

After application with solvent system pre-treatment



ARIANOR.

ARIAFIX (.4)

1. : 15 , 60
2. : 30 , 60

.4

Tests: on Yak hair
Pre-treatment step: 15 minutes, 60°C , then rinse
Colouring step: 30 minutes, 60°C , then rinse
Formula TW 1346: 0.2% of Arianor

The image displays four pairs of hair samples, each pair showing a color change indicated by a blue arrow. The pairs are labeled: SIENNA BROWN (light brown to dark brown), STRAW YELLOW (pale yellow to bright yellow), STEEL BLUE (light blue to dark blue), and MAHOGANY (light red to dark red).

ARIAFIX
(ARIANOR),

(COVACAP)

(COVARIANE).

5,6,7.

.5

NITRO DYES ON BLEACHED HAIR

Example: Covariane Rouge W3127 at 0.4%

FORMULA TW 980 AFTER APPLICATION

BEFORE SHAMPOOS		AFTER SHAMPOOS	
Not treated	Treated	Not treated	Treated

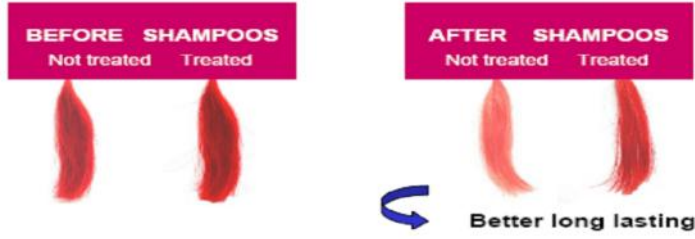
ARIAFIX,

.6,7.

.6

**MASS MARKET PRODUCT
BASIC AND NITRO DYES ON BLEACHED HAIR**

AFTER APPLICATION



.7

ACID DYES IN BLEACHING & COLOURING POWDER

Example: Covacap Orange W2100 à 5%

FORMULA TW 1444 AFTER APPLICATION



1. ARIAFIX

2. ARIAFIX

3.